

# 10 Rules for the classroom lessons

You have to promise to keep it. If you notice a violator,  
please notify the Administration/Student Support Office.  
02-961-0082



경희대학교 국제교육원  
INSTITUTE OF INTERNATIONAL EDUCATION, KYUNG HEE UNIVERSITY

01

Mask must  
be worn



# **Do not take off the masks anywhere in the building**

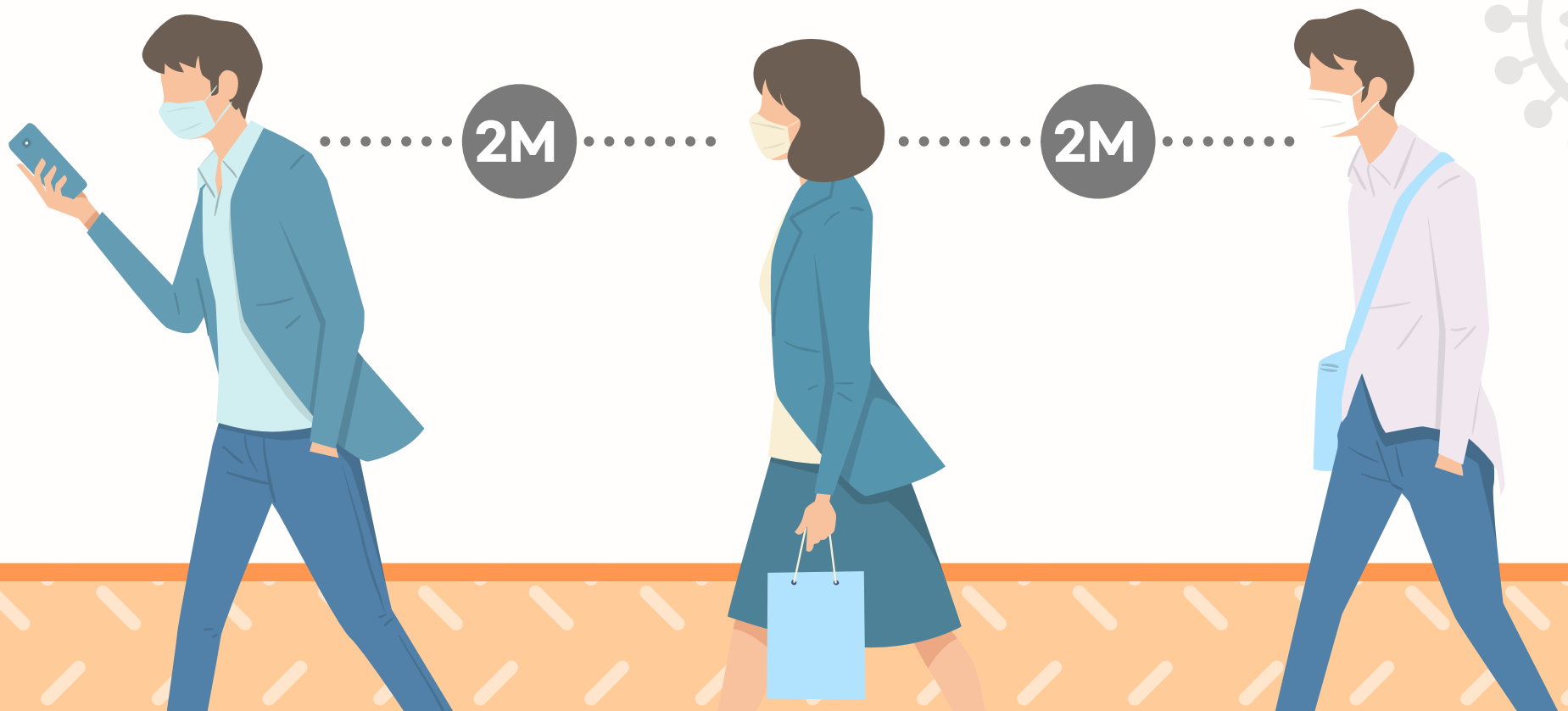
You should wear above KF80 mask or an equivalent product. Dental masks or cloth masks are not permitted. Lowering the mask and putting it over your chin is the same as not wearing a mask.

02

# Keep a distance of 2m

Be sure to sit in the designated seat and keep a 2m distance when moving.

Please, do not do face-to-face conversations within the building, such as classrooms, hallways, stairs, and restroom.



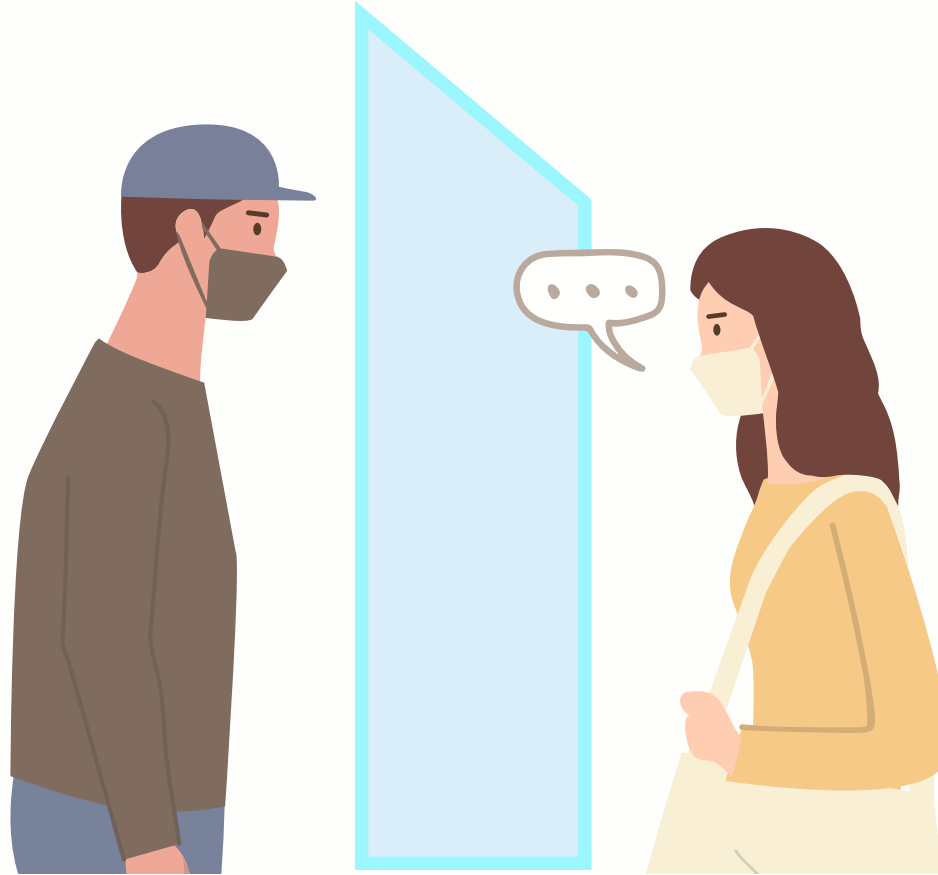
03



# Ventilate constantly

All doors and windows in the classrooms and hallways should be opened at all times. There are must be opened even the air conditioner or heater is turned on.

04



**The sneeze guard must be placed  
during the lectures and breaks,  
conversations**

Can hear well through the sneeze guard. Don't worry^^

05



**It is impossible to eat or drink,**  
**since lowering mask is not allowed**

Beverage are only allowed from a bottle  
by using a straw under the mask.

06

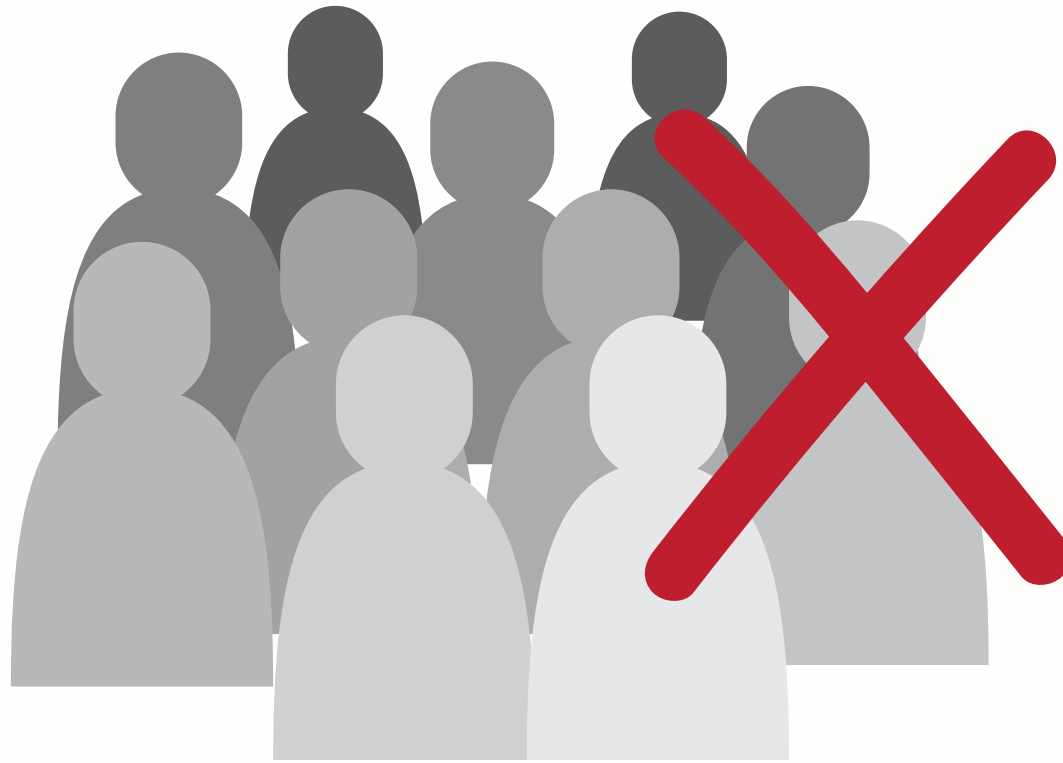


**Wash your hands for at least 30 seconds**

**Use a sufficient amount of detergent**

Do not save the detergent.  
Wipe thoroughly with a sufficient amount.

07



**Please, do not talk by gathering  
during breaks or after lectures**

In particular, it is absolutely  
forbidden to gather around the  
building to smoke or eat.





08



**The morning class should  
wipe the desk with alcohol tissue  
after class**

This is the consideration for afternoon class students.



**Those with symptoms such as cough, headache, body aches, and runny nose should never come to school and should receive an examination immediately**

If you are not feeling well during class, please notify to the teacher immediately. In this case, you must go immediately to a public health center or screening clinic and do a PCR test.

10



**All participants in face-to-face lectures should be extra careful in their daily life**

You should think that if you get infected, you can spread it to hundreds of people. In the worst case, face-to-face lectures will be completely canceled and will not be able to resume until the COVID-19 situation is completely over.

# Please keep it!

---

## It's for everyone



**경희대학교 국제교육원**

INSTITUTE OF INTERNATIONAL EDUCATION, KYUNG HEE UNIVERSITY